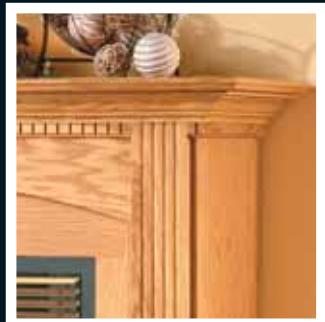




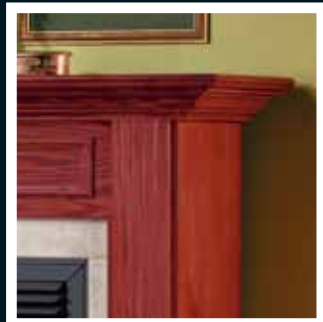
Princess in Dark Oak



Henry VIII in Medium Oak



Tower in Light Oak



Classic in Mahogany



Bonaparte in White



White



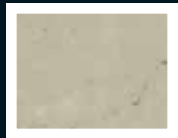
Green



Beige



Black



Almond



Ebony



Emperor Brown

Standard panels for the GD34, GD70 and the BGD48

HPBA  
Hearth, Patio & Barbecue Association

HPBA  
Hearth, Patio & Barbecue Association  
*H*earth Pads & Stove Boards

NAPOLEON  
QUALITY MANTELS



Mahogany Flush



Light Oak Corner



Raised Ceramic Tile

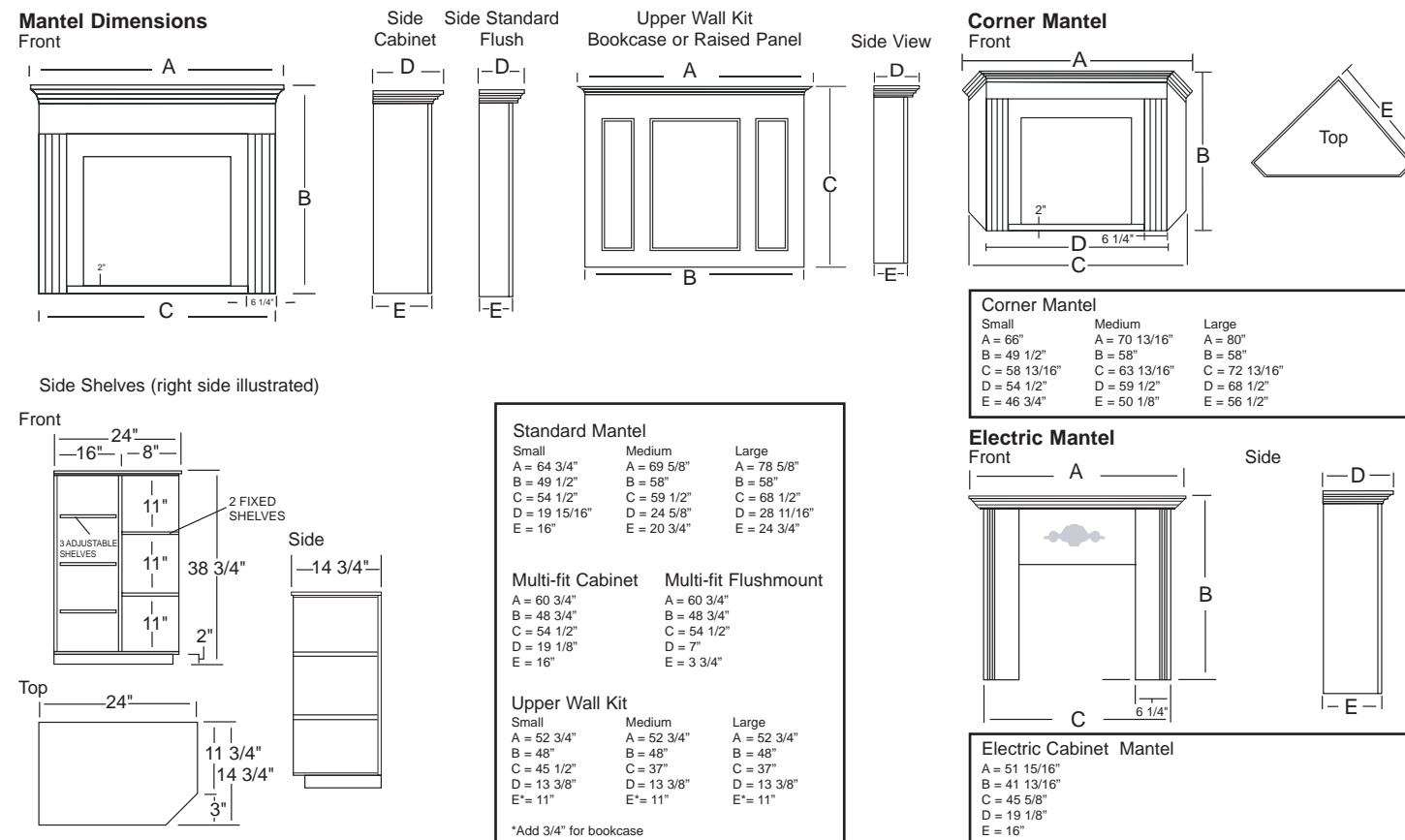


Mahogany Finish & Tile



Dark Oak

Each one of our hearth pads and stove boards are available in oak or mahogany finish in both flush wall style or corner mount. Elegant polished ceramic tile is also available in black, white, green & beige for all hearth pads, stove boards as well as mantel surrounds.



\* Cabinets, Mantels, Stove Boards and Hearth Pads are manufactured to specified dimensions. Napoleon is not liable for walls and floors that are not straight or level. Final trimming is the responsibility of the purchaser.

Consult your owner's manual for complete instructions and proper clearance to combustible materials. Check all local and national building codes and gas regulations. All specifications are subject to change without prior notice due to on-going product improvement. Napoleon® is a registered trademark of Wolf Steel Ltd.

Authorized Dealer



Wolf Steel Ltd.  
24 Napoleon Road  
Barrie, ON L4M 4Y8  
Canada

Wolf Steel Ltée-Logistique Quebec  
7200 Route Transcanadienne  
Montreal, PQ H4T 1A3  
Canada

Wolf Steel USA Inc.  
Crittenden, Kentucky  
USA 41030



HPBA  
Hearth, Patio & Barbecue Association



Phone 705-721-1212 • Fax: 705-722-6031  
www.napoleonfireplaces.com  
ask@napoleon.on.ca

Printed in Canada  
BR850 10/03

NAPOLEON  
QUALITY MANTELS

# Mantel Collection

FIREPLACE CABINETS, MANTELS & HEARTH PADS





Tower Cabinet in Medium Oak ▲  
Featuring Napoleon's BGD38 Gas Fireplace



Henry VIII Flush Mantel in Light Oak ▲  
Featuring Napoleon's GD70 Gas Fireplace



Princess Cabinet in Dark Oak ▲  
Featuring Napoleon's GD45 Gas Fireplace  
with Cast Surround



Classic Cabinet in Mahogany ▲  
Featuring Napoleon's GD36 Gas Fireplace

*Multi-fit Mantel*



▲ Elegance Cabinet in Medium Oak  
Elegance "stock" mantel available in medium oak only. Shown with "classic" upper wall bookcase kit & matching right and left side shelves sold separately. Featuring Napoleon's BGD36 gas fireplace.



Princess Corner Cabinet in Light Oak with Upper Wall Kit ▲  
Featuring Napoleon's GD36 Gas Fireplace



▲ Princess Corner Cabinet in Light Oak  
Featuring Napoleon's GD36 Gas Fireplace



*Old World Craftsmanship & Charm!*

Each and every Napoleon cabinet, mantel and hearth pad is hand-crafted with the utmost attention to detail to ensure a smooth fit and seamless design with your fireplace. Available in a variety of sizes and elegant finishes to suit your decor. Select from light, medium or dark oak, mahogany finish or a paint grade finish to match the distinctive style of your home. All Napoleon models are available as a full cabinet or flat mantel. Tranquility electric fireplace mantel is available in "Cabinet" only. Elegance "Stock" mantel is available in medium oak only.

Mantels are a natural wood product and therefore variances in colour may occur.



Bonaparte Cabinet in White with Upper Wall Kit ▲  
Featuring Napoleon's GD36 Gas Fireplace



Bonaparte Cabinet in White ▲  
Featuring Napoleon's GD36 Gas Fireplace



▲ Elegance Cabinet in Medium Oak  
Elegance "stock" mantel designed to fit both 33" & 36" fireplaces. Available in medium oak only. Featuring Napoleon's BGD36 gas fireplace

*Electric Fireplace Mantel*



▲ Tranquility Cabinet in Medium Oak  
Featuring Napoleon's EF38H electric fireplace (also suitable for EF34H).